

Report No.: HLF21008359E

Date: Sep 2, 2021

Page 1 of 8

Applicant : Shenzhen Super Eagle Tech Co.,Ltd

Address : Floor 6-7,buildingB,DAWO JIABAO industrial park,longtian community,longtian street, pingshan district, Shenzhen city,P.R.C

The following sample(s) was/were submitted and identified on behalf of the client as:

Sample Name : Power Supply/Travel Charger/Power Adpater

Sample Model : Refer to the next page(s).

Sample Style : /

Sample Received Date : Aug 25, 2021

Test Completed Date : Sep 2, 2021

Test Method :
 1, Screening test method: IEC62321-3-1:2013/XRF
 2, Wet chemical test method:
 Lead(Pb): IEC62321-5:2013/ICP-OES
 Cadmium(Cd): IEC62321-5:2013/ICP-OES
 Mercury(Hg): IEC62321-4:2013+A1:2017/ICP-OES
 Hexavalent Chromium(CrVI):IEC62321-7-1:2015/UV-VIS and
 IEC62321-7-2:2017/UV-VIS
 Polybrominated Biphenyls (PBBs): IEC62321-6:2015 /GC-MS
 Polybrominated Biphenyl Ethers(PBDEs): IEC62321-6:2015 /GC-MS
 3, Phthalates test method: IEC 62321-8:2017 / GC-MS

Test Results : Refer to the next page(s).

Test Requested	Conclusion
RoHS Directive (EU)2015/863 amending Annex II to Direxitive 2011/65/EU–Lead(Pb), Cadmium(Cd), Mercury(Hg), Hexavalent Chromium(CrVI), Polybrominated Biphenyls (PBBs), Polybrominated Biphenyl Ethers(PBDEs), Dibutyl phthalate (DBP), Butyl benzyl phthalate(BBP), Bis-(2-ethylhexyl)phthalate(DEHP), Di-iso-butyl ortho-phthalate(DIBP)	PASS

Reviewed by: *nivr*
 Lab Senior Engineer

Authorized Signature: *Chase*
 Technology Manager

In no circumstances shall the Company's responsibility extend beyond inspection, testing and reporting upon the samples actually drawn from the bulk and inspected, tested and surveyed by the Company and any inference to be drawn from the results of such inspection or survey or testing shall be entirely in the discretion and at the sole and exclusive responsibility of the Principal. This test report cannot be reproduced except in full.

FLION TESTING TECHNOLOGIES

Add: Gangzi Industrial Park, Furong Industrial Area, Xinqiao Village, Shajing Town, Bao'an District, Shenzhen City

Tel : 86-0755-2724 8885 Fax : 86-0755-2746 0090 Http://www.cnfft.com





Test Report



中国认可
国际互认
检测
TESTING
CNAS L6093

Report No.: HLF21008359E

Date: Sep 2, 2021

Page 2 of 8

Sample Model:

C900-050240,C900-PQ330W,C900-050100,CH74-050240-UK,CH32-050600-EU,CH45-050100-EU,
 CH43-050240-EU,CH41-PQ320W-EU,P961-PD320W-EU,CH74-PD330W,CH01-XXXXYY,
 CH02-XXXXYY-ZZ,CH03-XXXXYY-ZZ,CH04-XXXXYY-ZZ,CH05-XXXXYY-ZZ,CH06-XXXXYY-ZZ,
 CH07-XXXXYY-ZZ,CH07-050100-JP,CH08-050YYY-ZZ,CH08-050100-EU,CH09-XXXXYY-ZZ,
 CH09-050100-EU,CH10-XXXXYY-ZZ,CH11-XXXXYY-ZZ,CH12-XXXXYY-ZZ,CH13-XXXXYY-ZZ,
 CH14-XXXXYY-ZZ,CH15-055060-EU,CH15-050100-EU,CH15-120100-EU,CH15-XXXXYY-ZZ,
 CH16-XXXXYY-ZZ,CH17-XXXXYY-ZZ,CH18-XXXXYY-ZZ,CH19-XXXXYY-ZZ,CH20-XXXXYY-ZZ,
 CH21-XXXXYY-ZZ,CH22-XXXXYY-ZZ,CH23-XXXXYY-ZZ,CH24-050YYY-ZZ,CH24-XXXXYY-ZZ,
 CH24-050240-EU,CH25-XXXXYY-ZZ,CH27-XXXXYY-ZZ,CH27-050240-EU,CH28-PD318W,
 CH28-050240-EU,CH28-050210-EU,CH28-050200-EU,CH28-050170-EU,CH28-XXXXYY-ZZ,
 CH28-PD318W-EU,CH28-P318W-EU,CH28-PD320W-EU,CH28-PD320W-US,CH28-PD318W-US,
 CH29-XXXXYY-ZZ,CH29-PD345W,CH32-XXXXYY-ZZ,CH32-Q3182A,CH32-P3182A,CH32-P18Q18,
 CH32-XXXXYY,CH32-XXXXYY-ZZ,CH35-XXXXYY-ZZ,CH36-XXXXYY-ZZ,CH37-XXXXYY-ZZ,
 CH38-XXXXYY-ZZ,CH38-050100-EU,CH39-XXXXYY,CH39-XXXXYY-ZZ,CH41-PQ318W,
 CH41-XXXXYY-ZZ,CH41-PQ320W-EU,CH42-XXXXYY-ZZ,CH43-XXXXYY-ZZ,CH43-050240-EU,
 CH43-050310-EU,CH43-PQ318W,CH43-PD330W,CH43-050210-EU,CH43-XXXXYY-ZZ,
 CH44-050210-EU,CH44-050310-EU,CH44-051310-EU,CH44-XXXXYY-ZZ,CH45-XXXXYY-ZZ,
 CH45-050100-EU,CH47-XXXXYY-ZZ,CH47-XXXXYY-ZZ,CH50-XXXXYY-ZZ,CH51-XXXXYY-ZZ,
 SE-001,CH57-XXXXYY-ZZ,CH70-XXXXYY-ZZ,CH71-XXXXYY-ZZ,CH74-XXXXYY-ZZ,CH74-PD3182A,
 CH74-QC3182A,CH79-XXXXYY-ZZ,CH80-XXXXYY-ZZ,CH81,CH81-XXXXYY-ZZ,CH84-XXXXYY-ZZ,
 CH85-XXXXYY-ZZ,CH86-XXXXYY-ZZ,CH87-XXXXYY-ZZ,CH88-XXXXYY-EU,CH89-XXXXYYZZ,
 P909-XXXXYY-ZZ,P910-XXXXYY-ZZ,P915-050480-EU,P930,P931,P930-XXXXYY,P933,P934,P935,
 P936,P938,PD318W,P942-XXXXYY-ZZ,P951-XXXXYY-ZZ,P957,P958,P959,P960,P961-050210-EU,
 P961-050200-EU,P961-050210-UK,P961-050200-UK,P961-050100-AU,P961-050200-AU,
 P961-050210-KR,P961-050200-KR,P961-XXXXYY-ZZ,P961-PD320W-EU,P961-PD318W-EU,
 P961-PD320W-UK,P961-PD318W-UK,P961-PD320W-US,P961-PD318W-US,P961-PQ320W-EU,
 P961-PQ318W-EU,P961-PQ320W-UK,P961-PQ318W-UK,P961-PQ320W-US,P961-PQ318W-US,
 P961-QC318W-EU,P961-QC318W-US,P961-QC318W-UK,CH37-QC215W,P968-050100-US,
 P962-QC215W-US,CH28-PD320W-US,CH28-PD318W-US,CH46-050500-WW0,P930,P931,
 P931-050640-QW0,P962-XXXXYY-ZZ,P934,P934-PD330W-ZZ,CH74-PD330W-ZZ,P962,P963,
 P940,P968,P968-XXXXYY-ZZ,P937,P938,P900~P999,CH74-PD365W,CH74-PD330W,
 CH74-PD330W-EU,CH74-PD325W,CH74-PD325W-EU,CH74-PD320W,CH74-PD320W-EU,
 CH74-PD318W,CH74-PD318W-EU,CH74-QC318W,CH74-QC318W-EU,CH74-XXXXYY,
 CH74-XXXXYY-ZZ,CH74-Q182A4-EU,C900-PD318W,C900-PD320W,C900-PD327W,C900-PQ330W,
 C900-PQ318W,C900-QC318W,C900-PD330W,C900-050100,C900-XXXXYY,C900-050480,C900-050240,
 C900-XXXXYY,C901-XXXXYY,C902-XXXXYY,C903-XXXXYY,C904-XXXXYY,C905-XXXXYY,
 C910-XXXXYY,C912-XXXXYY,C913-XXXXYY,C915-P18Q18,C916-P30Q18,C900~C999,
 CAR01-XXXXYY,CAR02-XXXXYY,CAR08-XXXXYY,CAR09-050YYY,CAR10-XXXXYY,CAR11-XXXXYY,
 CAR14-050240,CAR14-050480,CAR14-XXXXYY,CAR17-XXXXYY,CAR17-P18Q18,CAR18-XXXXYY,
 CAR21-050210,CAR21-XXXXYY,CAR23-P3182A,CAR23-XXXXYY,CAR24-XXXXYY,CAR26-XXXXYY,
 Car27-XXXXYY,CAR28-XXXXYY,CAR30-XXXXYY,CAR30-050550,CAR30-XXXXYY,CAR31-XXXXYY,
 CAR32-XXXXYY,CAR34-P3182A,CAR34-XXXXYY,CAR35-XXXXYY,CAR36-XXXXYY,CAR37-XXXXYY,
 CAR38-XXXXYY,CABC-XXXXYY,CARABC-XXXXYY,CHAB-XXXXYY-ZZ,CHAB-XXXXYY,
 PABC-XXXXYY,PABC-XXXXYY-ZZ
 XXXXXXXXXXXX
 XXXXXX-XXXXXXXXXXXX-XXXXXX

The "ZZ" can be replaced by "US, EU, UK, SAA, CN, BR,AU,AR,IN,PSE or KR" , AB or ABC represent different models, can be number or characters. XXXandYYY represent output different voltage an current or watts, can be number or characters, XandYrepresents any model or is empty .For example, CH32-P18Q18, ABC is 32, XXX is P18 or XXX is PD18, YYY is Q18. CH32-050480-EU, AB is 32, 050 is output voltage 5V, 480 is output current 4.8A,ZZ is EU, P961-050210-US, ABC is 961, XXX is 050, YYY is 210, ZZ is US.

In no circumstances shall the Company's responsibility extend beyond inspection, testing and reporting upon the samples actually drawn from the bulk and inspected, tested and surveyed by the Company and any inference to be drawn from the results of such inspection or survey or testing shall be entirely in the discretion and at the sole and exclusive responsibility of the Principal. This test report cannot be reproduced except in full.

FLION TESTING TECHNOLOGIES

Add: Gangzi Industrial Park,Furong Industrial Area, Xinqiao Village, Shajing Town, Bao'an District, Shenzhen City

Tel : 86-0755-2724 8885 Fax : 86-0755-2746 0090 Http://www.cnfft.com



Test Results:

Part No.	Results	Cd	Pb	Hg	Cr ⁶⁺	PBBs	PBDEs	Conclusion on RoHS
1	EDXRF	BL	BL	BL	BL	--	--	--
	Wet Chemical Testing	--	--	--	--	--	--	Comply
2	EDXRF	BL	BL	BL	BL	BL	BL	--
	Wet Chemical Testing	--	--	--	--	--	--	Comply
3	EDXRF	BL	BL	BL	BL	BL	BL	--
	Wet Chemical Testing	--	--	--	--	--	--	Comply
4	EDXRF	BL	BL	BL	BL	BL	BL	--
	Wet Chemical Testing	--	--	--	--	--	--	Comply
5	EDXRF	BL	BL	BL	BL	BL	BL	--
	Wet Chemical Testing	--	--	--	--	--	--	Comply
6	EDXRF	BL	BL	BL	BL	--	--	--
	Wet Chemical Testing	--	--	--	--	--	--	Comply
7	EDXRF	BL	BL	BL	BL	--	--	--
	Wet Chemical Testing	--	--	--	--	--	--	Comply
8	EDXRF	BL	BL	BL	BL	IN	IN	--
	Wet Chemical Testing	--	--	--	--	N.D.	N.D.	Comply
9	EDXRF	BL	BL	BL	BL	BL	BL	--
	Wet Chemical Testing	--	--	--	--	--	--	Comply
10	EDXRF	BL	BL	BL	BL	--	--	--
	Wet Chemical Testing	--	--	--	--	--	--	Comply
11	EDXRF	BL	BL	BL	BL	BL	BL	--
	Wet Chemical Testing	--	--	--	--	--	--	Comply
12	EDXRF	BL	BL	BL	BL	BL	BL	--
	Wet Chemical Testing	--	--	--	--	--	--	Comply
13	EDXRF	BL	BL	BL	BL	BL	BL	--
	Wet Chemical Testing	--	--	--	--	--	--	Comply
14	EDXRF	BL	BL	BL	BL	BL	BL	--
	Wet Chemical Testing	--	--	--	--	--	--	Comply

In no circumstances shall the Company's responsibility extend beyond inspection, testing and reporting upon the samples actually drawn from the bulk and inspected, tested and surveyed by the Company and any inference to be drawn from the results of such inspection or survey or testing shall be entirely in the discretion and at the sole and exclusive responsibility of the Principal. This test report cannot be reproduced except in full.

FLION TESTING TECHNOLOGIES

Add: Gangzi Industrial Park, Furong Industrial Area, Xinqiao Village, Shajing Town, Bao'an District, Shenzhen City

Tel : 86-0755-2724 8885

Fax : 86-0755-2746 0090

Http://www.cnfft.com



Part No.	Results	Cd	Pb	Hg	Cr ⁶⁺	PBBs	PBDEs	Conclusion on RoHS
15	EDXRF	BL	BL	BL	BL	BL	BL	--
	Wet Chemical Testing	--	--	--	--	--	--	Comply
16	EDXRF	BL	BL	BL	BL	--	--	--
	Wet Chemical Testing	--	--	--	--	--	--	Comply
17	EDXRF	BL	BL	BL	BL	BL	BL	--
	Wet Chemical Testing	--	--	--	--	--	--	Comply
18	EDXRF	BL	BL	BL	BL	BL	BL	--
	Wet Chemical Testing	--	--	--	--	--	--	Comply
19	EDXRF	BL	BL	BL	BL	BL	BL	--
	Wet Chemical Testing	--	--	--	--	--	--	Comply
20	EDXRF	BL	BL	BL	BL	BL	BL	--
	Wet Chemical Testing	--	--	--	--	--	--	Comply
21	EDXRF	BL	BL	BL	BL	BL	BL	--
	Wet Chemical Testing	--	--	--	--	--	--	Comply
22	EDXRF	BL	BL	BL	BL	BL	BL	--
	Wet Chemical Testing	--	--	--	--	--	--	Comply
23	EDXRF	BL	IN	BL	BL	--	--	--
	Wet Chemical Testing	--	1.3%	--	--	--	--	Exemption
24	EDXRF	BL	BL	BL	BL	BL	BL	--
	Wet Chemical Testing	--	--	--	--	--	--	Comply
25	EDXRF	BL	BL	BL	BL	BL	BL	--
	Wet Chemical Testing	--	--	--	--	--	--	Comply

In no circumstances shall the Company's responsibility extend beyond inspection, testing and reporting upon the samples actually drawn from the bulk and inspected, tested and surveyed by the Company and any inference to be drawn from the results of such inspection or survey or testing shall be entirely in the discretion and at the sole and exclusive responsibility of the Principal. This test report cannot be reproduced except in full.

FLION TESTING TECHNOLOGIES

Add: Gangzi Industrial Park, Furong Industrial Area, Xinqiao Village, Shajing Town, Bao'an District, Shenzhen City

Tel : 86-0755-2724 8885

Fax : 86-0755-2746 0090

Http://www.cnfft.com



Phthalates Test Results:

Test Item	CAS No.	Test Method / Instrument	MDL (%)	Limit (%)
Dibutyl phthalate (DBP)	84-74-2	IEC 62321-8:2017 / GC-MS	0.005	0.1
Butyl benzyl phthalate (BBP)	85-68-7	IEC 62321-8:2017 / GC-MS	0.005	0.1
Bis-(2-ethylhexyl)phthalate (DEHP)	117-81-7	IEC 62321-8:2017 / GC-MS	0.005	0.1
Di-iso-butyl ortho-phthalate (DIBP)	84-69-5	IEC 62321-8:2017 / GC-MS	0.005	0.1

Test Item	Result (%)									
	2	3	4	5	8	9	11	12	13	14
Dibutyl phthalate (DBP)	N.D.	N.D.	N.D.	N.D.	N.D.	N.D.	N.D.	N.D.	N.D.	N.D.
Butyl benzyl phthalate (BBP)	N.D.	N.D.	N.D.	N.D.	N.D.	N.D.	N.D.	N.D.	N.D.	N.D.
Bis-(2-ethylhexyl)phthalate (DEHP)	N.D.	N.D.	N.D.	N.D.	N.D.	N.D.	N.D.	N.D.	N.D.	N.D.
Di-iso-butyl ortho-phthalate (DIBP)	N.D.	N.D.	N.D.	N.D.	N.D.	N.D.	N.D.	N.D.	N.D.	N.D.

Test Item	Result (%)							
	15	17	18	19	20	21	22	24
Dibutyl phthalate (DBP)	N.D.	N.D.	N.D.	N.D.	N.D.	N.D.	N.D.	N.D.
Butyl benzyl phthalate (BBP)	N.D.	N.D.	N.D.	N.D.	N.D.	N.D.	N.D.	N.D.
Bis-(2-ethylhexyl)phthalate (DEHP)	N.D.	N.D.	N.D.	N.D.	N.D.	N.D.	N.D.	N.D.
Di-iso-butyl ortho-phthalate (DIBP)	N.D.	N.D.	N.D.	N.D.	N.D.	N.D.	N.D.	N.D.

In no circumstances shall the Company's responsibility extend beyond inspection, testing and reporting upon the samples actually drawn from the bulk and inspected, tested and surveyed by the Company and any inference to be drawn from the results of such inspection or survey or testing shall be entirely in the discretion and at the sole and exclusive responsibility of the Principal. This test report cannot be reproduced except in full.

FLION TESTING TECHNOLOGIES

Add: Gangzi Industrial Park, Furong Industrial Area, Xinqiao Village, Shajing Town, Bao'an District, Shenzhen City

Tel : 86-0755-2724 8885 Fax : 86-0755-2746 0090 Http://www.cnfft.com



Remark:

(a) It is the result on total Br while test item on restricted substances is PBBs/PBDEs. It is the result on total Cr while test item on restricted substances is Cr⁶⁺.

(b) Results are obtained by EDXRF for primary screening, and further chemical testing by ICP (for Cd, Pb,Hg), UV-VIS (for CrVI) and GC/MS (for PBBs, PBDEs) is recommended to be performed, if the concentration exceeds the below warning value according to IEC 62321-3-1: 2013 (Unit: mg/kg)

Element	Polymer	Metal	Composite Materials
Cd	$BL \leq (70-3\sigma) < X < (130+3\sigma) \leq OL$	$BL \leq (70-3\sigma) < X < (130+3\sigma) \leq OL$	$LOD < X < (150+3\sigma) \leq OL$
Pb	$BL \leq (700-3\sigma) < X < (1300+3\sigma) \leq OL$	$BL \leq (700-3\sigma) < X < (1300+3\sigma) \leq OL$	$BL \leq (500-3\sigma) < X < (1500+3\sigma) \leq OL$
Hg	$BL \leq (700-3\sigma) < X < (1300+3\sigma) \leq OL$	$BL \leq (700-3\sigma) < X < (1300+3\sigma) \leq OL$	$BL \leq (500-3\sigma) < X < (1500+3\sigma) \leq OL$
Br	$BL \leq (300-3\sigma) < X$	Not applicable	$BL \leq (250-3\sigma) < X$
Cr	$BL \leq (700-3\sigma) < X$	$BL \leq (700-3\sigma) < X$	$BL \leq (500-3\sigma) < X$

(c) BL = Below Limit, OL = Over Limit, IN = Inconclusive, LOD = Limit of Detection

(d) The XRF screening test for RoHS elements – The reading may be different to the actual content in the sample be of non-uniformity composition

(e) mg/kg = ppm = 0.0001%, N.D. = not detected (<MDL), --- = not conducted

(f) Unit and Method Detection Limit (MDL) in wet chemical test:

Test Items	Pb	Cd	Hg
Units	mg/kg	mg/kg	mg/kg
MDL	2	2	2

The MDL for single compound of PBBs & PBDEs is 5 mg/kg and MDL of Cr⁶⁺ for polymer & composite sample is 2 mg/kg.

(g) According to IEC62321-7-2:2017, result on Cr⁶⁺ for metal sample is shown as Positive/Negative.

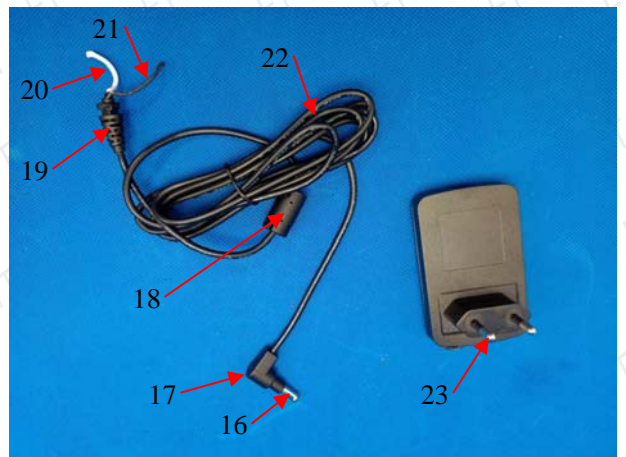
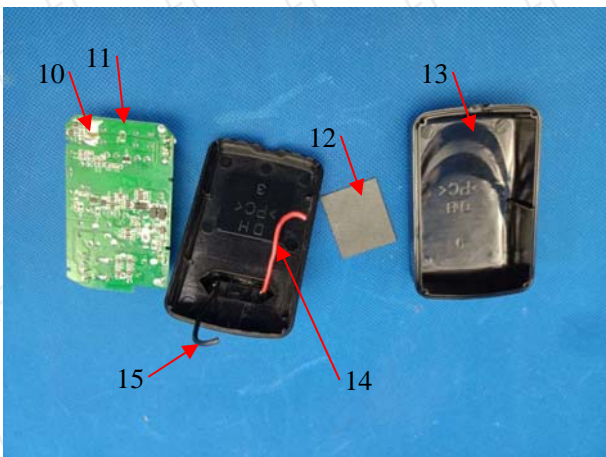
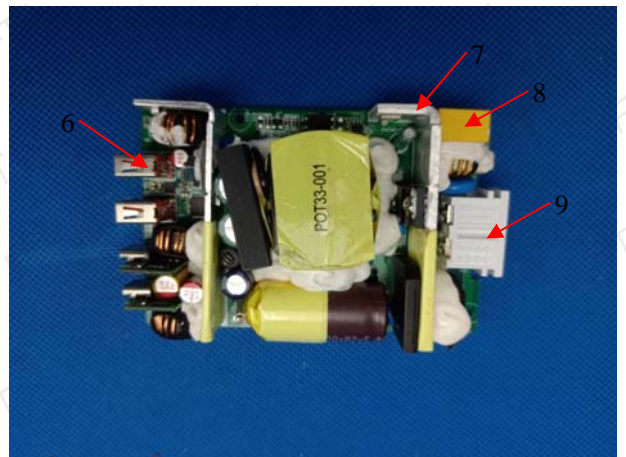
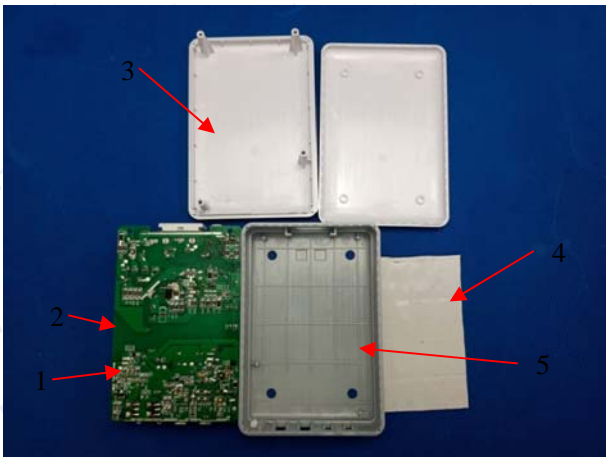
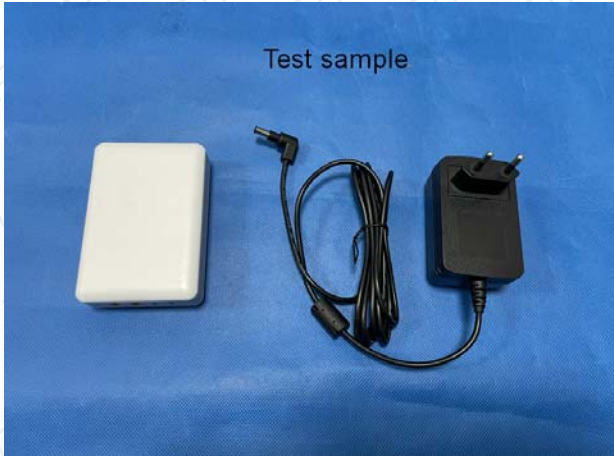
Positive = Presence of Cr⁶⁺ coating, Negative = Absence of Cr⁶⁺ coating.

(g) “*” (The result of No.23): The sample is made of copper alloy based on the client’s declaration.

According to RoHS Directive 2011/65/EU exemption regulation, the result is exempted if the content of Pb in the copper alloy is less than 4%.

Remark: The above result(s) was/were only given as the informality value and only for reference

Sample photo



In no circumstances shall the Company's responsibility extend beyond inspection, testing and reporting upon the samples actually drawn from the bulk and inspected, tested and surveyed by the Company and any inference to be drawn from the results of such inspection or survey or testing shall be entirely in the discretion and at the sole and exclusive responsibility of the Principal. This test report cannot be reproduced except in full.

FLION TESTING TECHNOLOGIES

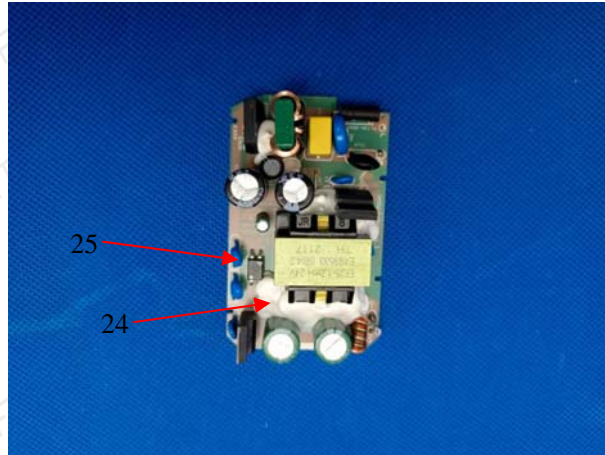
Add: Gangzi Industrial Park, Furong Industrial Area, Xinqiao Village, Shajing Town, Bao'an District, Shenzhen City

Tel : 86-0755-2724 8885

Fax : 86-0755-2746 0090

Http://www.cnftt.com





Note: The results shown in this report refer only to the sample(s) tested.

***** End of Report *****

In no circumstances shall the Company's responsibility extend beyond inspection, testing and reporting upon the samples actually drawn from the bulk and inspected, tested and surveyed by the Company and any inference to be drawn from the results of such inspection or survey or testing shall be entirely in the discretion and at the sole and exclusive responsibility of the Principal. This test report cannot be reproduced except in full.

FLION TESTING TECHNOLOGIES

Add: Gangzi Industrial Park, Furong Industrial Area, Xinqiao Village, Shajing Town, Bao'an District, Shenzhen City

Tel : 86-0755-2724 8885

Fax : 86-0755-2746 0090

Http://www.cnfft.com

